

KINGFISHER IS ALWAYS AT YOUR SERVICE WHERE YOU ARE, THERE WE ARE !!!

- Technical Consulting
- Spares/Equipment
- Drydocking Service
- Surveys and Supervision
- Ship Communication
- Special Service

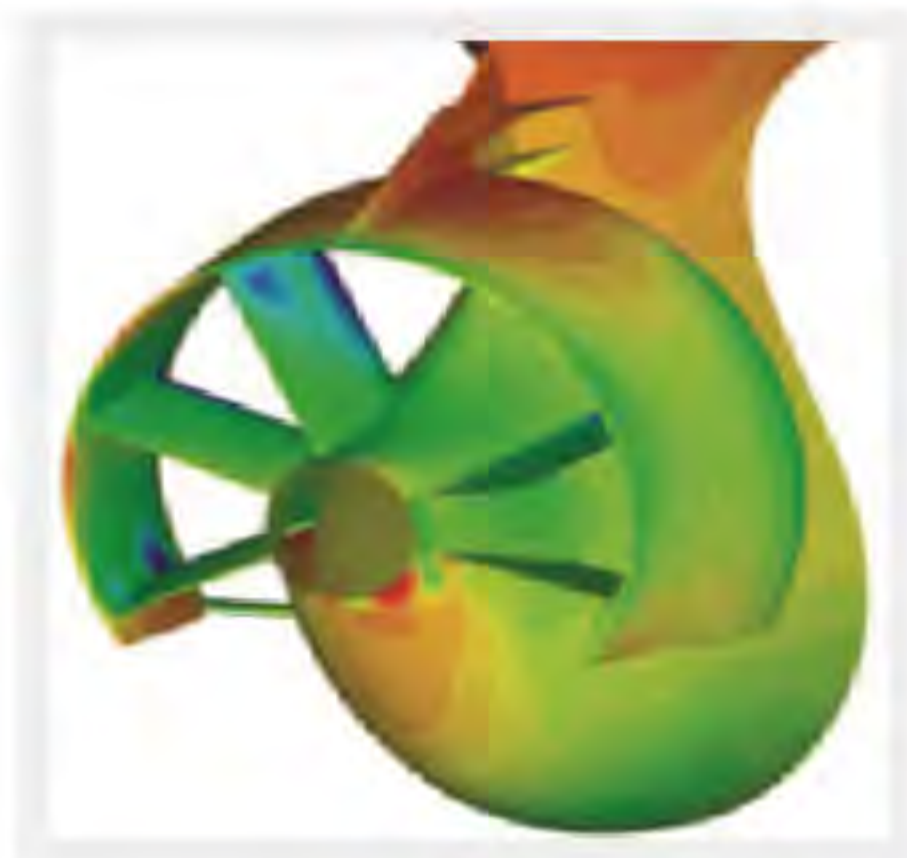


**One-Stop Comprehensive
Marine Services Provider**

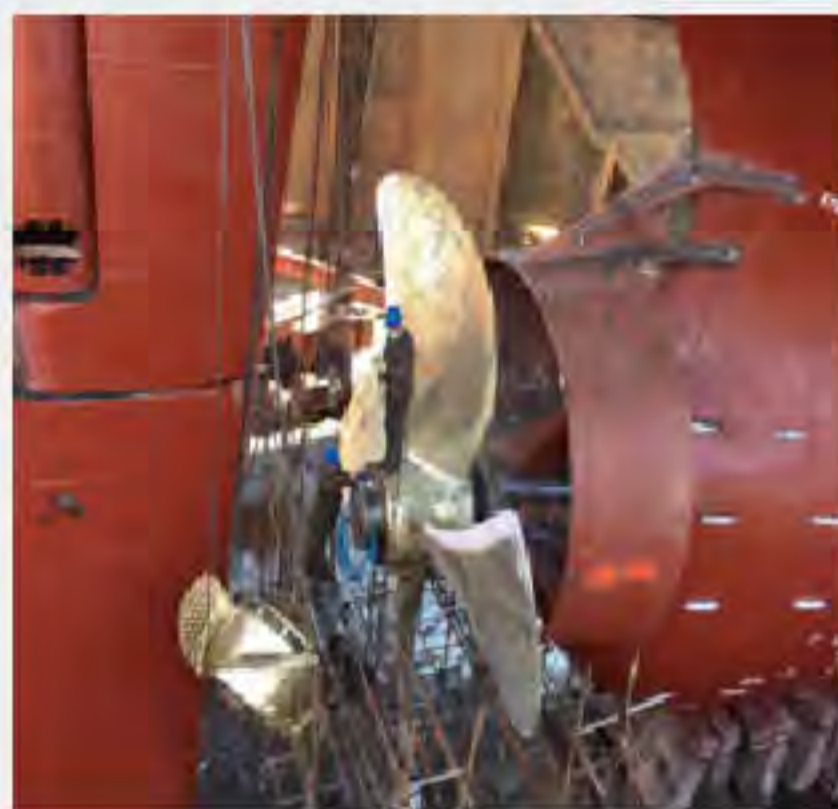
Technical Consulting

Fuel Saving Devices (ESD)

Kingfisher Marine Service (KMS) is providing the technical consulting of the fuel saving devices including CFD Calculation, Fuel Saving Devices Proposal, Class Approval, On-site Installation Guidance, Propeller Trimming etc.



CFD Calculation



On-site Installation



Propeller Trimming

BWMS and SCR Retrofitting and Installation

KMS is providing the technical consulting of BWMS and SCR Retrofitting, Cooperation with the Maker and Yard, providing a Package Solution (Turn-key Project), including Onboard 3D Scanning / System Modification Design and Approval / Supervision during Fabrication / Installation and Commissioning etc.



Onboard 3D Scanning



Supervision During Prefabrication, Installation and Commissioning

Main Equipment Spares

Main Engine	
Engine Brand	Engine Type
WinGD (Wartsila)	RT-FLEX, X-Series
MAN B&W	MC, MC-C, MC-E, ME-B, ME-C

Aux. Engine	
Engine Brand	Engine Type
DAIHATSU	DK-20, DL-20
MAN	L21/31 L23/30A L27/38 L28/32A L32/40 V32/40
YANMAR	EY18, N18, N330, M200, M220

Steering Gear	
Brand	Type
CSSC Luzhou	HD

Purifier	
Brand	Brand
Alfa Laval	GEA

Boiler	
Brand	Brand
Greens-Shazhou	Aalborg

Deck Crane	
Brand	Brand
TTS	Tusiji

Spares/Equipment

Others Advantaged Spares

Plate Cooler Rubber Seal (OEM)



Brand	Brand	Brand	Brand
Alfa Laval	Thermowave	GEA	Accessen
API Schmidt	SPX	Funke	TRANTER
APV	Vicarb	SWEP	SONDEX

Pumps

KMS is providing the various pumps and spares with qualified maker including Centrifugal pump, Screw pump and Injection pump etc.



Centrifugal Pump



Screw Pump



Injection Pump

Motors

KMS is providing with the Electric Motors and Hydraulic Motors with qualified maker.



Electric Motor



Hydraulic Motor

Outfitting Parts

KMS is providing with the ship's outfitting parts with qualified maker.



Anchor



Anchor Chain



Chock

Spares/Equipment

Customized Parts

KMS is providing various customized parts including Rubber Seals, Door Packings, Brake Lining, Heating Glasses, Hydraulic Cylinders etc.



Manhole Seal



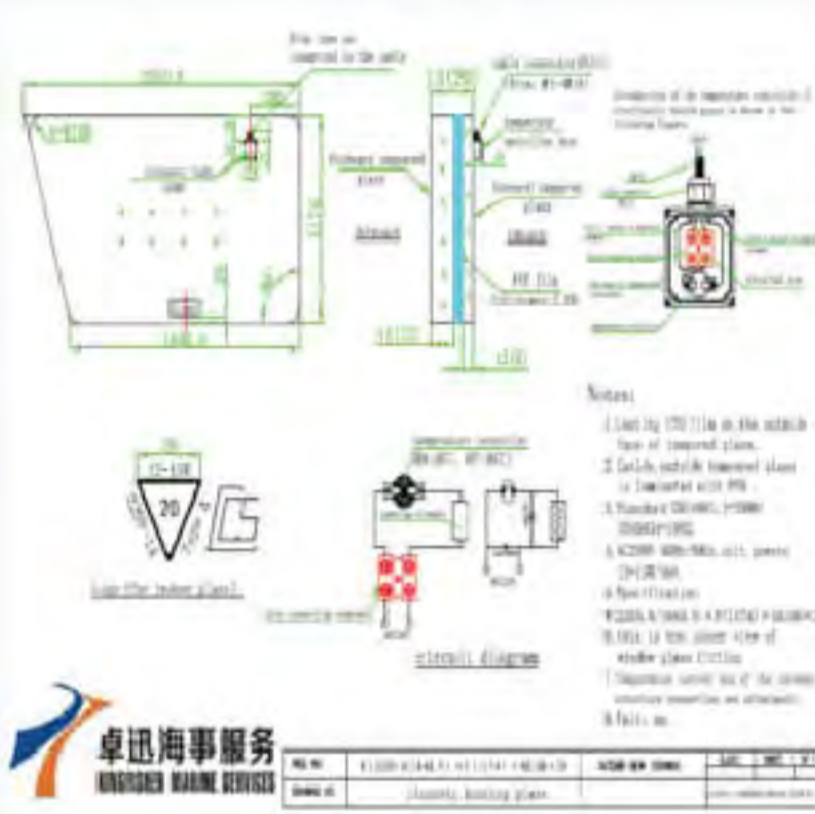
Door Seal



Hatch Cover Seal



Brake Lining



Heating Glass for Wheelhouse



Hydraulic Cylinder

Ship Stores Supply

Kingfisher Marine is providing various ship stores including Valves (GB/JIS/ASTM Etc.), various Instruments, Gauges, Transmitters, Level Switches, Polymer Bush, Ship Regular Consumables and Stores etc., in accordance with IMPA, ISSA codes.



Level Gauge



Thermometer



Pressure Switch



Butterfly Valve



Stop Valve



Rudder Polymer Bush



Air Cylinder



Rubber Joint



Expansion Joint



Tools



Lights



Safety Equipment

Drydocking Services

UT Gauging Service according to Class Requirements

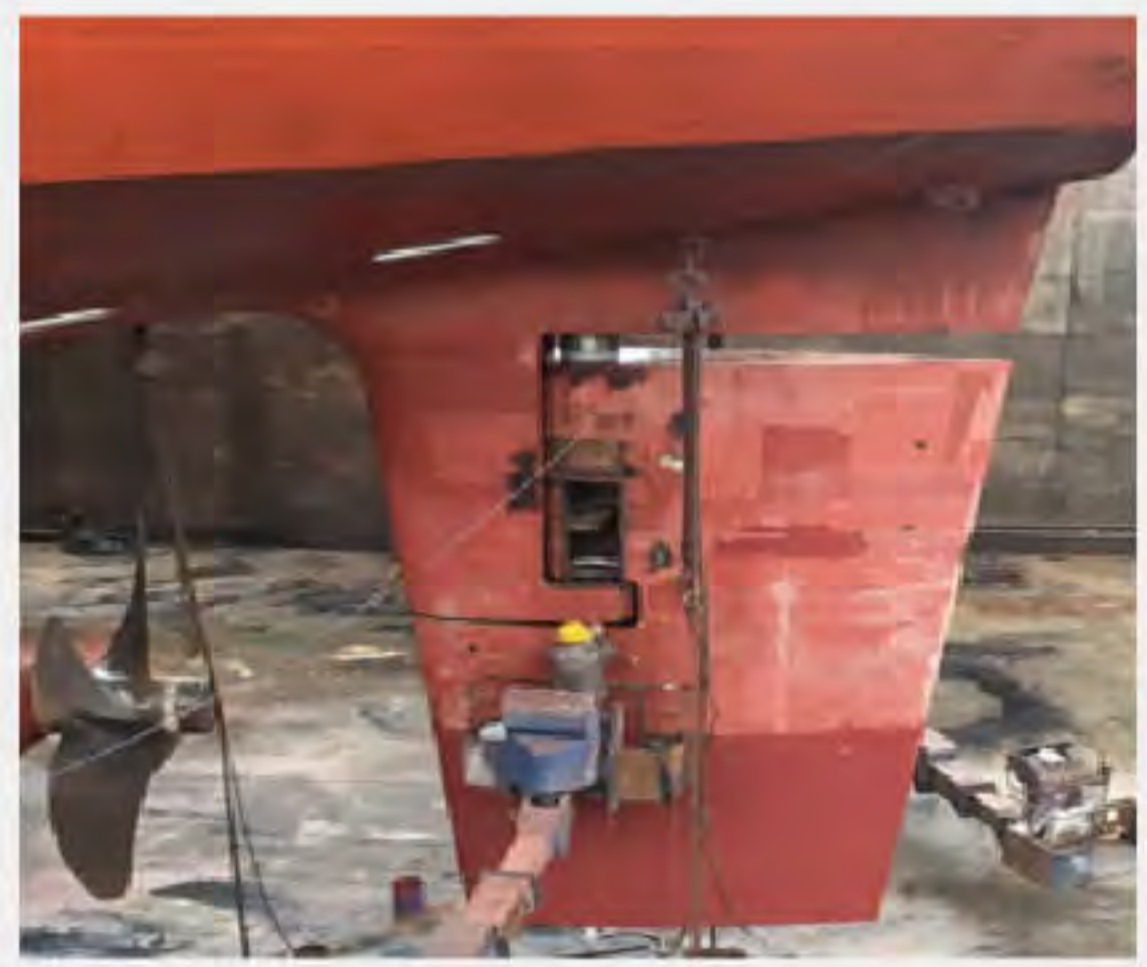
Turbo Charger Overhaul

ICCP and MGPS Spares and Services

Docking Repair Supervision and Assistance



T/C Overhaul and Testing



Docking Repair Supervision



ICCP Service



MGPS

Surveys and Supervision

Condition Survey / Pre-Purchasing Survey / On-Hire, Off-Hire Survey etc.



Condition Survey Report

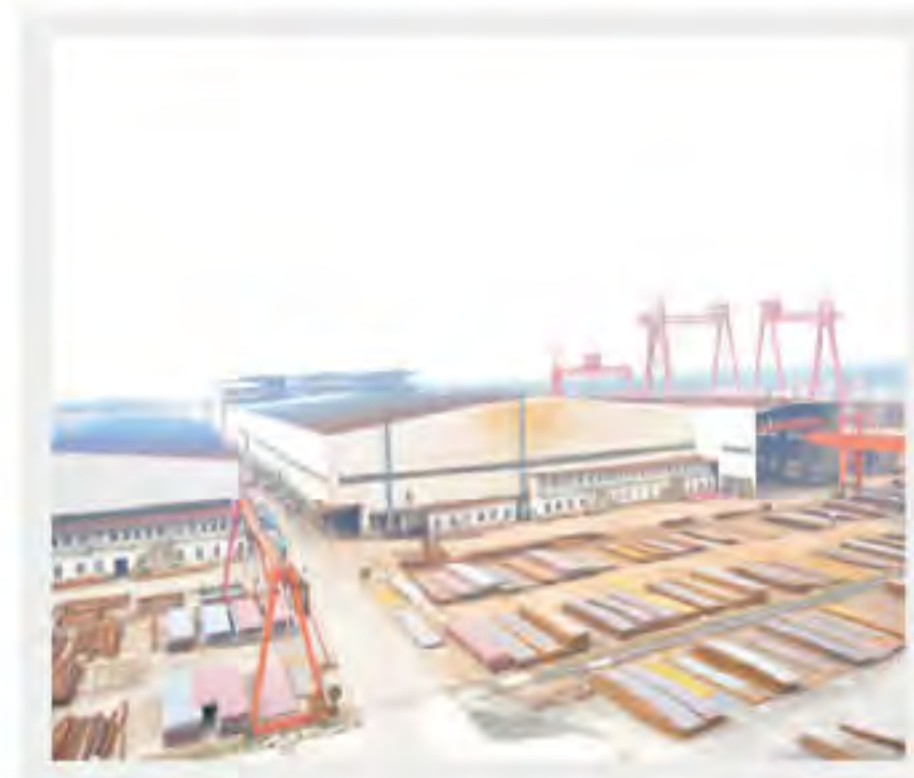


Condition Survey Report

New Building Supervision / Shipyard Survey / Yard Assessment



Shipyard Survey and Assessment



Shipyard Survey and Assessment



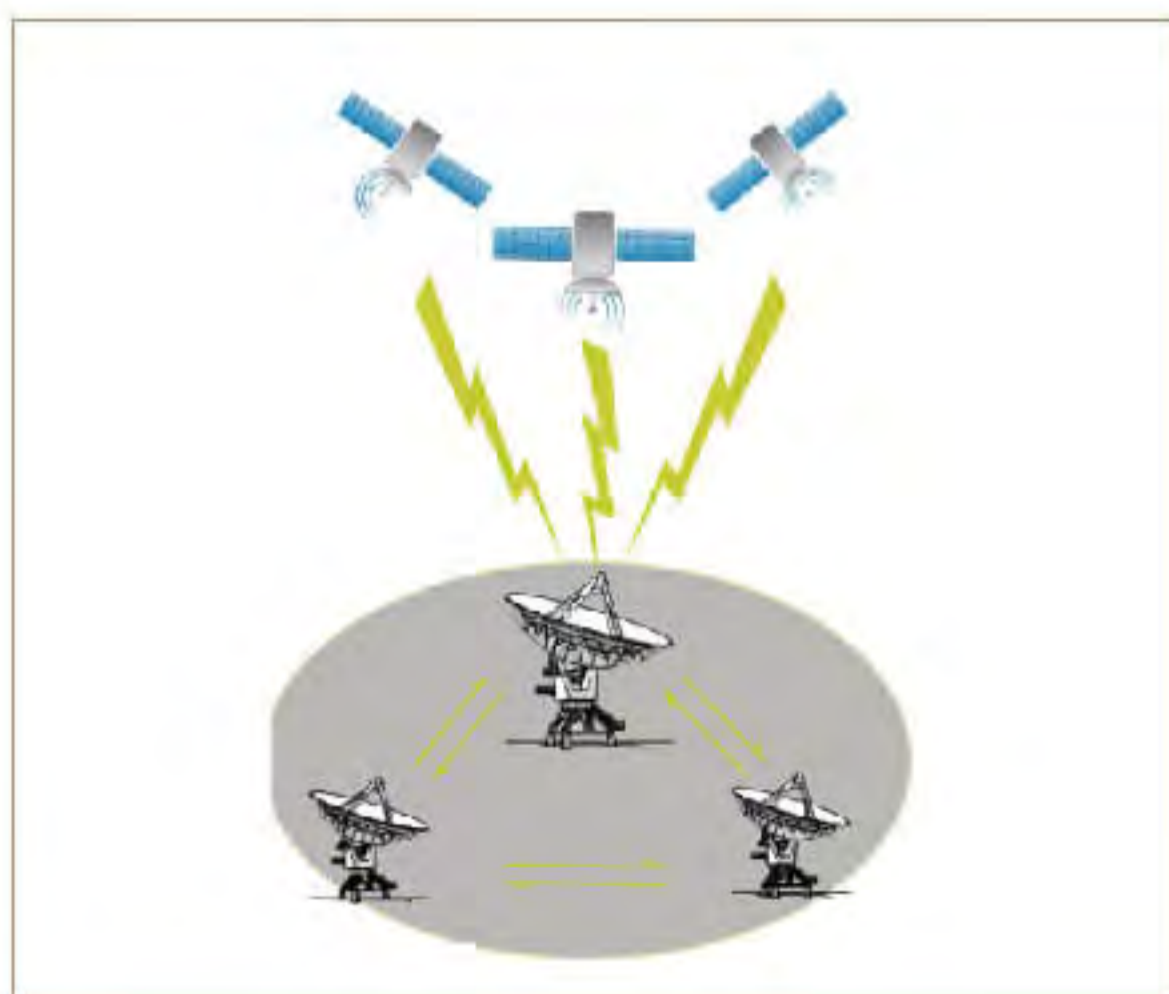
New Building Supervision



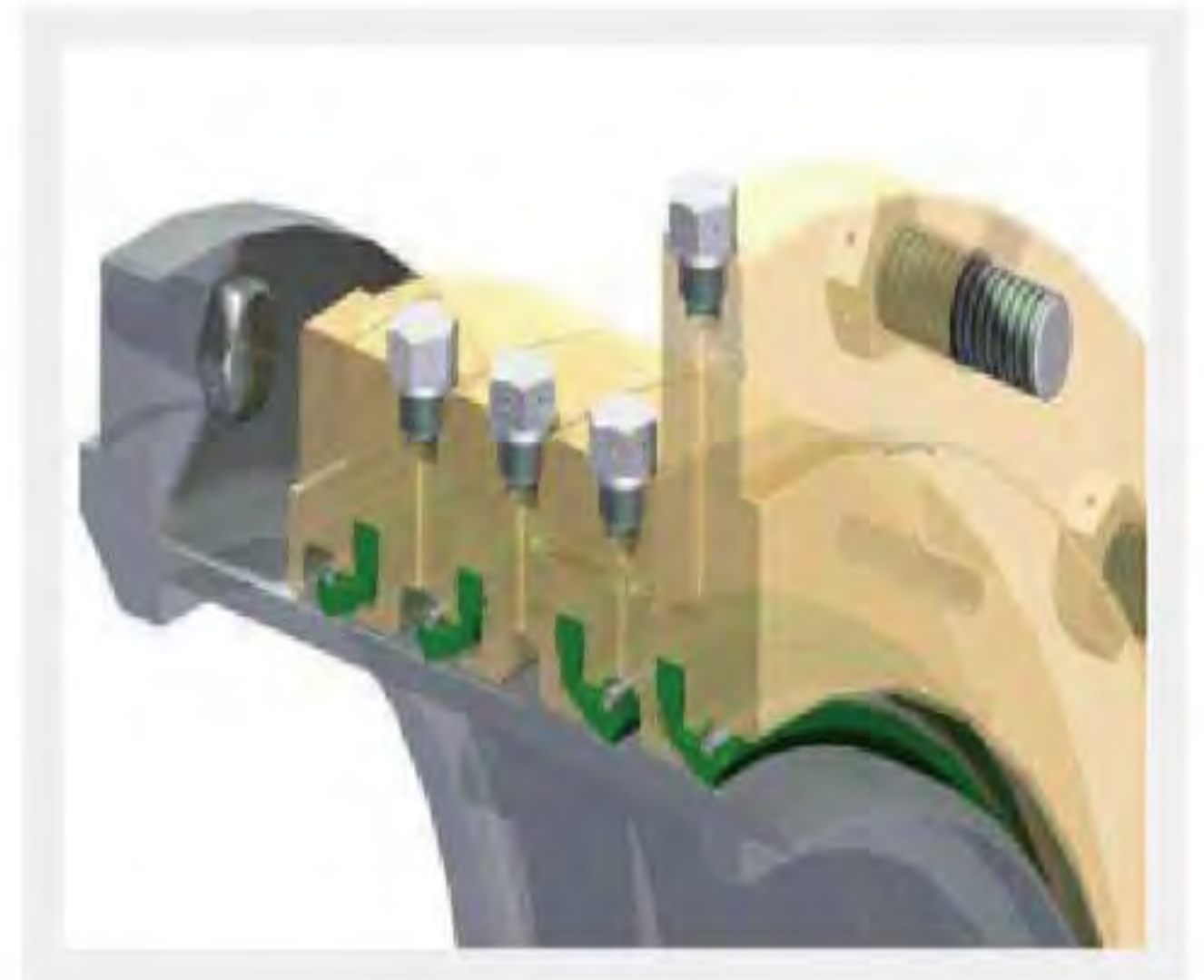
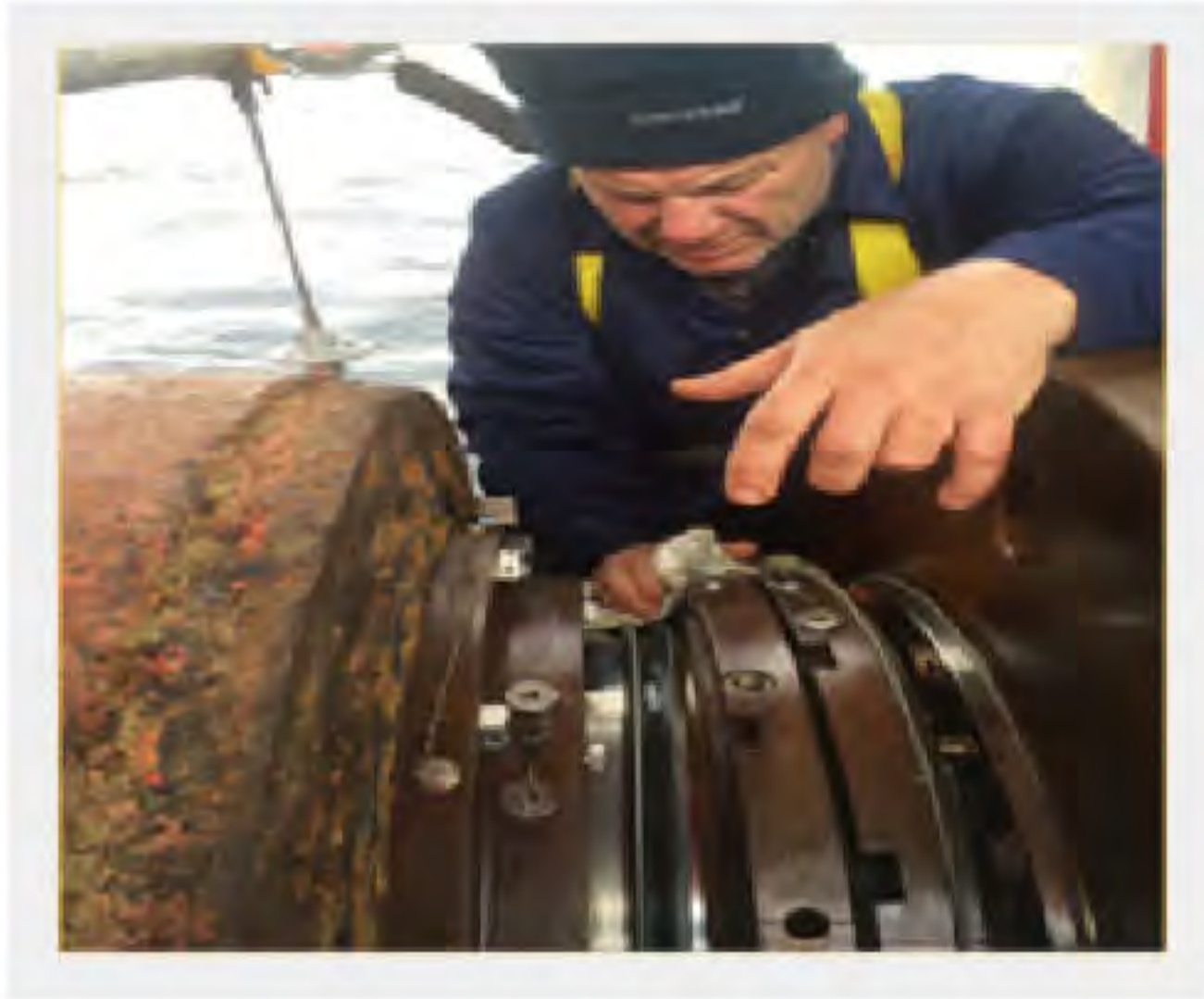
New Building Supervision

Ship Communication

Kingfisher Marine is providing the world-wide ship communication service, cooperated with Guilder Star, a professional Chinese ship communication provider, reliable signal but low cost.



Kingfisher Marine is providing the Stern Tube Sealing Spare Parts and Services with RM Propulsion from Netherlands



Main Clients



CONTACT US

 www.kingfishership.com

 shipservice@kingfishership.com

Shanghai Head Office

PIC: Mr. Franks Wang

TEL: +86 21 51170586

MOBILE: +86 138 1624 8600

ADD: Suite 802-803, Building B, No.1308 Lianhua Road, Hongwell Lotus Plaza,
Minhang Area, 201102, Shanghai China

Yangzhou Branch Office:

PIC: Ms. Annie Dai

TEL: +86 514 83909594

MOBILE: +86 138 5277 8010

ADD: Rm. 1303, Building B, No.108 West Jiangyang Road, Fengchuang International
Plaza, Hanjiang District, 225012 Yangzhou, Jiangsu China