

## **DUCT CLEANING**

- An R/C Robotic drive was then place inside of the duct in order to explore the inner area of duct to determine the stage of cleanliness and other residual contaminant. Video shot shall capture all photos shoots and shall submit for references.



Robotic machines kits witch LCD Monitor



Robotic machine spare parts



Ducting cleaning before and after



Duct cleaning Final Inspection



## **ELECTRICAL AND AUTOMATION**

- Design and Fabrication of various Electrical Control Panels, Overhauling of motors and alternators.
- Servicing of Automation equipment and systems.



Installation of New Control Panel



Installation of Control Panel switch



New Control Panel after Installation



Electrical Control Switch(main board)



Laying of cable on board

## Over Hauling of Motor



Motor damage winding



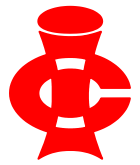
Damage Winding Removed



New Coil Winding

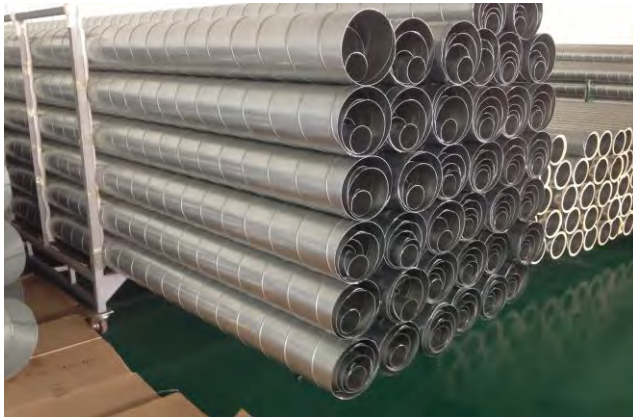


Assembling of motor after Overhauling



**GI /STAINLESS STEEL DUCTING & FITTINGS**

- Specialize in Fabricate, supply & Install of all GI/Stainless Steel Ducting, Duct fittings that give consistency and aesthetics to the Marine's appearance.



Stockiest of spiral Ducting



Installation of spiral ducting



G.I Rectangular Ducting



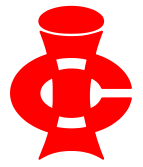
Stainless steel Ducting



Spiral Duct Elbow



A60 Insulation on board



## REFRIGERATION PLANT

- Design, assemble and Install new refrigeration equipment including services of various parts.
- Specialize in Fabrication and installation of new cold room using Polyurethane Thermal Insulated Modular Panels.



Assembling of Chiller Unit



Checking of refrigeration system



Reconditioning of Compressors



Evaporator & Fan Assembly Unit



**HVAC EQUIPMENT**

Fabrication and renewal of various types of Air Conditioning unit and related equipment, i.e Explosion / Non Explosion Proof Fans & Motors, Fire Dampers, and Exhaust Hood for Galleys.



Fabrication of New Condenser



Assembling of New Condenser



Manufacturing of Evaporator Coil with Copper Fins



Provision Plant of Chillers Units



Portable AHU unit for Hire



Existing Marine Engine of Air cooler removed from on board



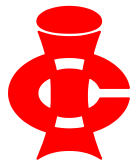
Existing Marine Engine of Air Cooler Measuring Dimension



New Marine Engine of Aircooler fabrication



New Marine Engine of Aircooler Installation



**MACHINING & SPARES**

- Range of Lathe and Milling machine are available in our facility. Stockist of various spares i.e Carrier, Bock, Bitzer, Daikin, Copeland, etc.



Spiral Ducting Fabrication Machine



Lathe Work in Progress





Coil fins Stamping Machine



Programing of CNC Slotting Machine



Machining of New Spindle on the Milling Machine



Overview of factory space



Stockist of Sealed Compressor



Stockist of Refrigerant Gas



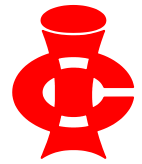
Stockist of Copper Fittings



Stockist of Fan Coil unit



Stockist of Reconditioned Compressor



**PIPING & STEELWORK (GENERAL REPAIRS)**

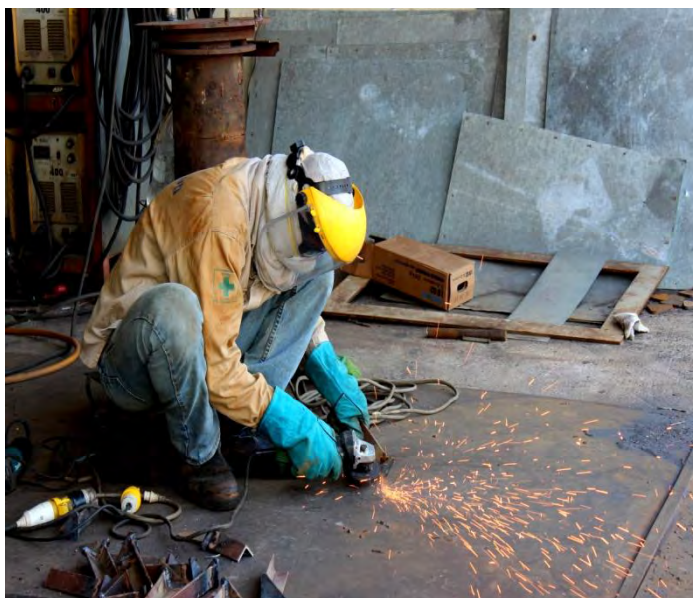
- Provide “Round-the-Clock” Services for Afloat repairs at anchorage, on voyage and in shipyards.
- Besides the core activities, Index-Cool is partnering with shipyards in Singapore and China for various in-house repair activities, i.e. Pipe work, steel repairs, carpentry and others.



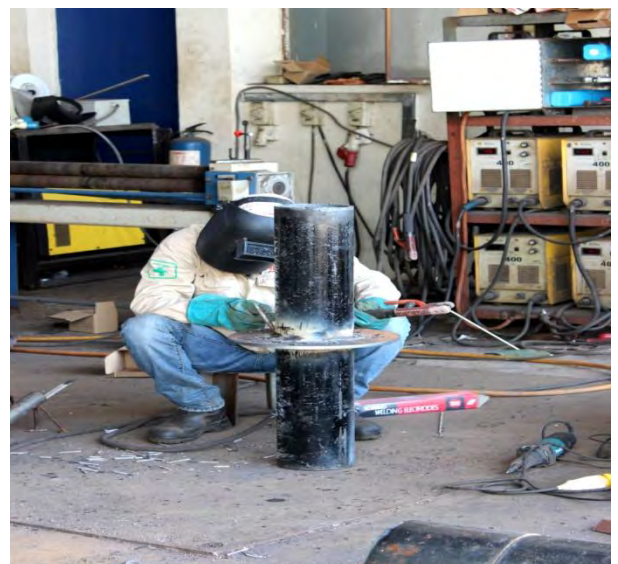
Pipe Work



Steel work in Progress



Grinding in progress



Pipe welding in Workshop



**VENTILATION EQUIPMENT**

- Specialize in fabrication of specially designed Gooseneck, Mushroom ventilator And Fan House.
- Extensive Experience in Fabrication & Installation of New Trunking & Marine Ventilation System.



Fabrication of New Mushroom Units



Installation of Mushroom on-board



Fabrication & Installation of Gooseneck



Fan House



Fabrication of New Trunking in Progress