

Yardtech's News

VOLUME 2 ISSUE 3

30 YEARS EXCLUSIVE REPRESENTATION OF THE BIG SHIPYARD IN SCHIEDAM / ROTTERDAM
1989: WILTON FIJENOORD / 2005 - TODAY: DAMEN SHIPREPAIR ROTTERDAM / DSR (DAMEN GROUP)



WELCOME

DAMEN GROUP remained operational throughout the crisis and served their Customers with consistency and seriousness, above all COVID-19 free!

A difficult summer, due to the Covid-19 has come to an end.

We welcome the month of October and we wish you all, Health, Safety and Progress!

The whole World have experienced 7 tragic months with many Countries to suffer with high percentages of deaths and Lock Downs.

Nowadays, everybody is trying to come back to the daily routine but with many precautions.

DAMEN GROUP never stopped operations in N. W. Europe and B. Sea Area (Mangalia) and managed to complete interesting Projects with full protection for their staff and Owner's staff on board.

In the beginning of the New Year 2021, more Shiprepair Projects are welcome at DAMEN MANGALIA since Newbuilding Projects are completed.

Damen BREST were obliged to stop operations for some weeks because of Government's decision for Lock Down.

Damen CURACAO, on the other hand, was also open but the lack of International flights prevented each vsl's Team to fly to the Shipyards for attendance of the vsl's dd repairs.

NORTHSOUTH MARITIME signed a Contract with our Principals DAMEN GREEN SOLUTIONS for 10 vessels for BWT installation (BIOSEA / UV System) starting at DAMEN DUNKIRK on 20th September 2020 (1st vsl) continuing later this year at DAMEN CURACAO (2nd and 3rd vsl) until end of 2021 (place of installation, in combination with their dd rprs of the rest vsIs have not been decided, yet).

Despite the difficulties, our valuable Customers keep on visiting our Principals DAMEN SHIPYARDS worldwide and to complete successful Projects.

Yardtech Marine Services SA

30 years in the

Greek Shipping Market

Breaking News

1. Recent Projects of Greek VsIs @ DAMEN Shipyards

Presenting:

- 2. INDEX COOL GROUP OF COMPANIES
- 3. ASTICAN Shipyard
- 4. NOSCO & PREGOL Shipyards
- 5. KINGFISHER MARINE SERVICES

30 years in the Greek Shipping Market



www.yardtech.gr
yardtech@otenet.gr

30 Years in the Greek Shipping Market



DAMEN VEROLME ROTTERDAM



INDEX-COOL MARINE & INDUSTRY



NOSCO SHIPYARD

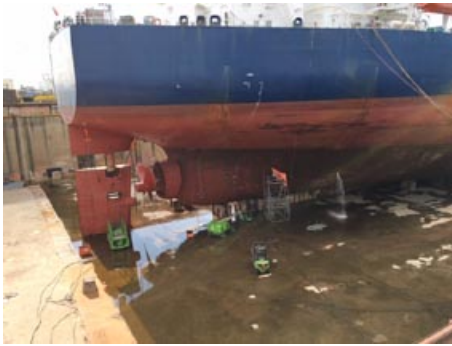


ASTICAN SHIPYARD

Recent Projects of Greek Vessels @ DAMEN Shipyards (1/3)

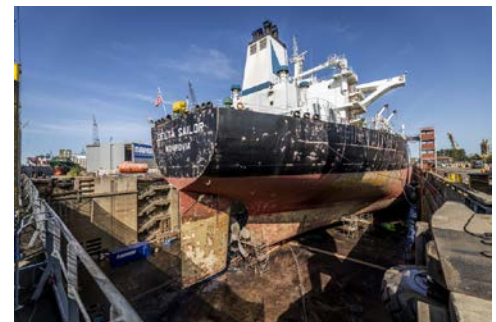
DAMEN SHIPYARDS MANGALIA / DAMEN VEROLME ROTTERDAM

- **THENAMARIS** visited both **DAMEN MANGALIA** (MV SEADANCER) and **DAMEN VEROLME** (MV SEARANGER) during the previous months, with successful results.



DAMEN SHIPREPAIR ROTTERDAM / DAMEN SHIPREPAIR BREST

- **DELTA TANKERS** have completed dd rprs on two big Tankers:
 - Aframax Tanker DELTA SAILOR at **DAMEN ROTTERDAM** (beg September 2020) and
 - Suez max Tanker DELTA KANARIS at **DAMEN BREST** (mid-September 2020).



Recent Projects of Greek Vessels @ DAMEN Shipyards (2/3)

DAMEN SHIPYARDS MANGALIA

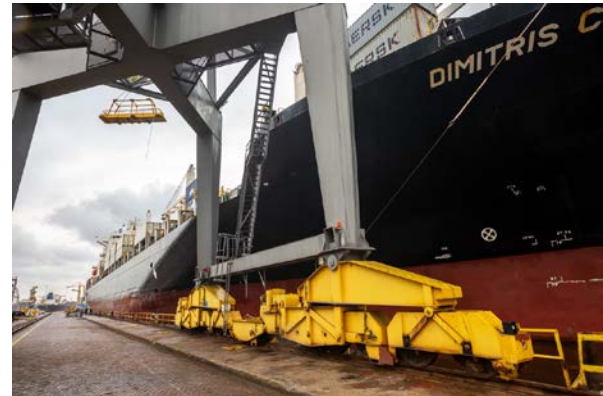
- **TMS TANKERS** have completed, until today, 11 vsls at **DAMEN MANGALIA** (dd repairs, Scrubber + BWT retrofit).
 - MT CARMEL, MT BELMAR and MV DAYTONA have completed the a.m. repairs and MT SAGA will be the 11th vsl to enter drydock on about 25th September 2020.



Recent Projects of Greek Vessels @ DAMEN Shipyards (3/3)

DAMEN SHIPREPAIR AMSTERDAM

- **DANAOS SHIPPING** cooperated with **DAMEN SHIPREPAIR AMSTERDAM** (MV DIMITRIS C)



DAMEN SHIPREPAIR BREST - DAMEN VEROLME ROTTERDAM

- **DYNAGAS** in cooperation with **YAMAL** booked at **DAMEN BREST** and at **DAMEN VEROLME**, 3 LNGS, in total.

DAMEN SHIPREPAIR CURACAO

- **SEA PIONEER** cooperated with **DAMEN CURACAO** on MV DIGNITY during August and this cooperation goes on with two more vsls during September-October 2020 : MV CLARITY and MV HONESTY.
- **MM MARINE** has just completed dd rprs at **DAMEN CURACAO** on MT DILOS and intends to continue the cooperation with Shipyard booking a 2nd vsl KASSOS for dd rprs on about end October 2020.



INDEX-COOL MARINE & INDUSTRY PTE. LTD

- **INDEX-COOL MARINE & INDUSTRY PTE. LTD** is a member of the Index-Cool Group that has been engaged in the Singapore Marine Industry since 1977, providing afloat marine repairs and services at anchorage or on-voyage.
- One of the Company's core competences is in Marine Air-Conditioning & Refrigeration Plants. In recent years Index-Cool widened its business scope and provided HVAC turnkey solutions to clients in Oil & Gas offshore sector,
- **HVAC turnkey solutions include:**
 - Engineering Design and Equipment Integration for Air-conditioning, Mechanical ventilation and Refrigeration plants
 - System design is in accordance to Approving Classification requirements and ASHRAE
 - Fabrication of "Explosion-proof" HVAC units suitable for hazardous areas
 - Installation, Testing and Commissioning in-situ
 - Systems conversion, up-grading and or retrofitting
 - Preventive Maintenance Services (PMS) and Plant Trouble-shooting & Inspection (PTI) Systems
- **Solutions provided are competitive because Index Cool:**
 - Fabricates Evaporator and Cooling coils in-house with its workshop facilities
 - Supplies Refrigerant Compressors & Spares
 - Is well supported with an efficient team of Design and Service Engineers & Technicians

DUCT CLEANING, ELECTRICAL AND AUTOMATION, OVER HAULING OF MOTOR, I /STAINLESS STEEL DUCTING & FITTINGS, REFRIGERATION PLANT, HVAC EQUIPMENT, MACHINING & SPARES, PIPING & STEELWORK (GENERAL REPAIRS), VENTILATION EQUIPMENT

OFFICIAL SUBCONTRACTOR OF ALL THE SINGAPOREAN SHIPYARDS <https://index-cool.com.sg/>



RIGGING AND TESTING SOLUTIONS



Offshore-Life Boat jerry can



Wire Spooling



Static Pull Test

Deck Tugger Winch



Vessel Crane Load Testing

INDEX-EVERGREEN CARPENTRY & MARINE SERVICES

We specialize in engineering, procurement, construction and installation support in accommodation and architectural turn-key solution for marine and offshore industry.



Window Curtain



Furniture



New Vinyl Flooring



New Ceramic Flooring



Re-Upholstery of Sofa

Our Services

- Accommodation upgrading and conversion
- Carpentry and soft furnishing (Supply & Install) etc. fabrics for Curtains, Bedding , Upholstery..
- Custom made Furniture and Fixture
- Deck sheathing and flooring (Supply & Install) etc. Underlayment, Vinyl, Carpet, Epoxy floor, Ralise floor, Ceramic tile, Floating floor system.

ASTICAN SHIPYARD



- In the beginning of September 2020, **YARDTECH MARINE SERVICES SA** was proposed by the above Shipyard (**ASTICAN SHIPYARD**) to represent them, initially and for a certain period, on non-exclusive basis, in the Greek Shipping Market, after the termination of Exclusive Contract with their previous Greek representative.
- **ASTICAN** is a strategically located Yard in the Canary Islands, Western coast of Africa, for any repair or conversion project, highly skilled and reliable.



<https://www.astican.es/>

- **1. Syncrolift**

175 mts long, 30 mts wide, 10,000 tons lifting capacity, for vessels up to 36,000 DWT. The dry-docking system is a versatile Syncrolift platform with a lifting capacity of 10.000 MT in dry-docking condition for vessels up to 36.000 DWT and a beam limitation of 30 m. Vessels can be dry-docked at very short notice.

- **2. Berth and docking lanes**

There are 7 docking lanes (2x220 m. long, 2x180 m. long and 3x120 m. long) with ample space surrounding the vessel to allow work to be easily carried out and not suffer interferences with other ships. Mobile cranes with capacities of up to 600 MT service dry-docked vessels.

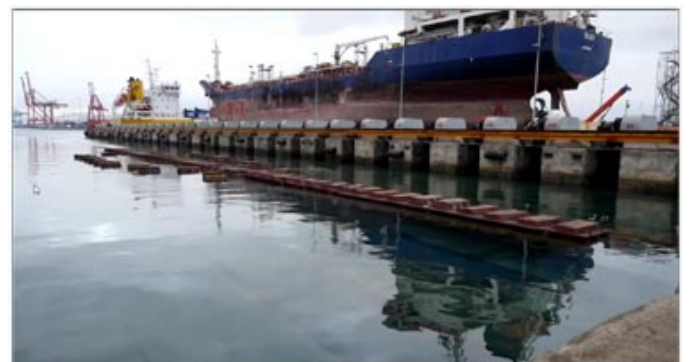
- **3. Berth capacity**

Availability of 700 m long of self-repairing piers with drafts between 8 and 12 m. Two rotating gantry cranes up to 45 MT and 60 m high for servicing vessels alongside.

- **4. Offices and canteen**

- **5. Workshops**

Warehouse, Maintenance Workshop, Mechanical Workshop, Steel and Piping Workshop, Kongsberg Workshop and a Multipurpose Workshop with a surface of 1.080 m² and 2 overhead cranes of 15 ton. each, in a dust free environment and available for OEM's upon request.



NOSCO SHIPYARD



- **NOSCO Shipyards** is a leading and internationally trusted solutions provider for the marine, offshore and energy sectors. Businesses include ship repair, upgrading and conversion, large-scale module construction as well as building specialized vessels for offshore operations and transportation in the energy sector.
- **NOSCO Shipyards** is situated along the North-Eastern coastline of Vietnam. Strategically located approximately 120 km from Noi Bai International Airport in Hanoi, 35 km from the maritime capital of Hai Phong City and 30km from the UNESCO Heritage Site of Halong Bay area.
- A well-established yard fully equipped with Marine and Fabrication facilities, and a state-of-art Syncrolift with the capacity of 75,000 DWT connecting to a series of dry berth to perform high quality of marine services in a safe environment by committed and highly-skilled workforce.

FACILITIES

FABRICATION FACILITIES		MARINE FACILITIES	
FABRICATION AREA	<ul style="list-style-type: none"> • 10,000m² 	SYNCROLIIFT	<ul style="list-style-type: none"> • L224 x W 35m • Lifting up to 28,000 tons (capacity: 75,000DWT)
HULL WORKSHOP	<ul style="list-style-type: none"> • CNC flame/plasma cutting machines • Hydraulic shearing machine • Hydraulic 3 rolls plate bending machine • Hydraulic pressing machine • Folding machine • Rolled section bending machine • Welding machine MIG, MAG 	DRY BERTHS 1-8	<ul style="list-style-type: none"> • Capacity: 30,000 – 75,000 DWT
ENGINE, MECHANIC & ELECTRICAL WORKSHOP	<ul style="list-style-type: none"> • Grinding machine • Lathe machine • Drill machine • Boring - milling machine • Portable boring machine • Pressure test machine • Equipment to test the load of generator engine 	PIER FOR WET BERTH	<ul style="list-style-type: none"> • L300 X W 22.5m • 2 Panamax and 1 Handy size
PIPE WORKSHOP	<ul style="list-style-type: none"> • CNC pipe bending machine • Steel Pipe cut machine • Circular sawing machines • Chamfering machine • Automatic welding machine • TIG welding machine • Camera system to check inside of pipe • Flushing machine 	QUAYSIDE CRANE	<ul style="list-style-type: none"> • 2 • 50T
		OVERHEAD CRANE	<ul style="list-style-type: none"> • 2 • 20T + 50T
		WATER DEPTH	<ul style="list-style-type: none"> • 5m
		CRANES	<ul style="list-style-type: none"> • 2 x Jib crane (50T) • 1 x mobile crane (30T) • 1 x mobile crane (100T)
		HEAVY DUTY VEHICLE	<ul style="list-style-type: none"> • 3 x Caterpillar tractors • 1 x excavator • 15 x cherry picker (working ability 16-26m)

www.noscoshipyards.com



PREGOL SHIPYARD



- **Pregol Shipyard** (54° 41.821' N 20° 27.173' E) provides a full range of services to maintain ships within a state of complete technical readiness. Highly qualified staff and extensive experience in ship repair permit to perform work of any complexity, from emergency repair to major overhaul and modernization.
- **Pregol Shipyard** has berths up to 7 meters depth equipped with shore electricity and cranes up to 32 tons lifting capacity.
- Convenient geographical location of the yard, ice-free port and two-way pilotage through the Kaliningrad Seaway Canal connecting the city ports and the Baltic Sea allow reducing time in the roads. The Seaway Canal is 23 miles (43 km) long, 50-80 meters width and up to 10.5 meters depth. Vessels up to 200 meters long and 8 meters draft can go through the canal. The canal is available for navigation the whole year round.
- **Pregol Shipyard** repairs around 150 ships every year and most of them are foreign. Personnel of the yard will take care of all customs formalities that could be necessary for repair after arrival and before departure of ship. Docking operations are carrying out 24 hours a day, 7 days a week and the whole year round.
- Shiprepair works are carrying out under supervision of DNV-GL, Russian Maritime Register of Shipping, Russian River Register, Lloyd's Register, Bureau Veritas, as well as other classification societies. Standing regional offices of DNV-GL and RMRS are located at the shipyard. The company has quality management system based on the requirements of ISO 9001–2008.
- **Pregol Shipyard** is ready to carry out all kind of shiprepair works. Machining of parts up to 12 m length, 10 tons weight and 800 mm diameter using turning lathe. Balancing of parts from 5 to 300 kg weight. Repair of steerable columns and thrust-ers. Welding, surfacing and reconstruction of shape for propeller shafts, propellers and rudder stocks. Boring of bossing and propeller-shaft struts.

Floating docks

	442	430	675
Max ship's docking weight, t	4500	5200	4500
Max ship's length, m	128,0	143,0	120,0
Max ship's breadth, m	20,1	18,4	18,5
Max ship's draft, m	5,4	6,0	3,5
Quantity of dock cranes	2	2	1
Lifting capacity of dock cranes, t	5	5	5

All docks could use dock pier crane (32 tons), floating crane (40 tons) and autocrane (40 tons) in addition to dock cranes.



<http://www.pregol.ru/>

Berths and cranes

Specifications	Berths						
	№1	№2	№3	№4	№5	№6	№7
Berth length, m	120	140	90	115	120	60	70
Berth width, m	20	20	15	20	20	40	30
Crane quantity	1	1	a/c	1	1	1	a/c
Lifting capacity of cranes, t	32	32	40	32	32	16	40
Crane radius, m	30	30	30	30	30	30	30

a/c — autocrane


KINGFISHER (SHANGHAI) MARINE SERVICES CO. LTD



- **Kingfisher (Shanghai) Marine Services Co., Ltd.**, is a Company located in China, specifically in the Shanghai Pilot Free Trade Zone, with a register capital of RMB 5 million, providing comprehensive and professional marine services, such as ship maintenance, marine technology, procurement of materials and spare parts, and efficient coordination with Chinese ship component makers.
- **Kingfisher** has local advantages and enjoys preferential policies, having priority from the administration, convenient financial support and preferential taxation.
- **Kingfisher** has a Group of highly professional, experienced, and enthusiastic engineers. They come from different top world universities, with Marine Engineering background and many years' experiences and skills.

Cooperated Shipyards in Middle and South China	Cooperated Shipyards in North China
1. Jiusheng shipyard (N:31°57' E:120°22') Dock size: 1.1 225M x 45M x 12.9M 1.2 210M x 35M x 12.9M 2. Longshan shipyard (N:29°78' E:122°08') Dock size: 2.1 310M x 55M x 13M 2.2 235M x 40M x 11M 3. Huafeng shipyard (N:30°11' E:122°18') Dock size: 3.1 275M x 45M x 13.5M 3.2 405M x 68M x 14.5M	1. CUD (weihai) shipyard (N:36°50' E:122°16') Dock size: 1.1 355M x 78M x 14M 1.2 325M x 54M x 13M 2. Sanjin shipyard (N:37°45' E:122°28') Dock size: 2.1 320M x 41.5M x 11.9M 2.2 220M x 37M x 18.2M (float) 3. Xixiakou shipyard (N:37°42' E:122°64') Dock size: 3.1 205M x 38M x 7.5M 3.2 248M x 38M x 7.5M 3.3 300M x 45M x 8M 3.4 300M x 54M x 8.5M

SPARES EQUIPMENT

Main Equipment Spares	<ul style="list-style-type: none"> • Main Engine • Aux. Engine • Steering Gear • Purifer • Boiler • Deck Crane
Others Advantaged Spares 	<ul style="list-style-type: none"> • Plate Cooler Rubber Seal • Pumps • Motors • Outfitting Parts • Customized Parts • Ship Stores Supply

www.kingfishership.com

YARDTECH's PRINCIPALS NET

EXCLUSIVITIES

1. DAMEN SHIPREPAIR AND CONVERSION YARDS

(from handy size vessels up to ULCCs)

- DAMEN SHIPREPAIR ROTTERDAM
- DAMEN VEROLME ROTTERDAM
- DAMEN SHIPREPAIR AMSTERDAM
- DAMEN SHIPREPAIR DUNKERQUE
- DAMEN SHIPREPAIR VLISSINGEN
- DAMEN SHIPREPAIR BREST
- DAMEN SHIPREPAIR CURACAO
- DAMEN MANGALIA SHIPYARD

(for smaller vessels)

- DAMEN OSKARSHAMNSVARVET OSKARSHAMN, SWEDEN
- DAMEN SHIPYARDS DEN HELDER DEN HELDER, THE NETHERLANDS
- ORANJEWERF AMSTERDAM, THE NETHERLANDS
- DAMEN SHIPYARDS MAASKANT STELLENDAM, THE NETHERLANDS
- DAMEN SHIPREPAIR HARLINGEN

2. TSUNEISHI

- TSUNEISHI CORPORATION - HIROSHIMA – JAPAN

3. THI (CEBU)

- TSUNEISHI HEAVY INDUSTRIES (CEBU) INC. - CEBU ISLAND - PHILIPPINES

4. INDEX – COOL GROUP OF COMPANIES

5. KINGFISHER (SHANGHAI) MARINE SERVICES

COOPERATIVE SHIPYARDS

1. MALTA

- PALUMBO GROUP

2. ADRIATIC SEA / CROATIA

- VICTOR LENAC (PALUMBO GROUP)

3. SINGAPORE

- SINGAPORE - SINGAPORE TECHNOLOGIES MARINE

4. BATAM INDONESIA

- ASL SHIPYARDS

5. CHINA

- CUD (WEIHAI) SHIPYARD
- POT - SHANDONG PURE OCEAN TECHNOLOGY
- HUARUN DADONG SHIPYARD (SHANGHAI AREA)
- FUJIAN HUADONG
- YIU LIAN DOCKYARDS (SHEKOU)

6. VIETNAM

- NOSCO SHIPYARD

7. CANARY ISLANDS

- ASTICAN SHIPYARD

8. RUSSIA KALININGRAD

- PREGOL SHIPYARD

*We rely on a constant attention to quality and dedication to the Customers.
Our aim is to deeply analyze Customers' needs and to satisfy them.*



YARDTECH MARINE SERVICES S.A.

Exclusive Agents of DAMEN SHIPREPAIR & CONVERSION Yards
in North Europe, West Europe, Curacao and
Black Sea Area (Mangalia Shipyard)

Land Lines: +30 210 4538692, 4538838

Mobile Lines: +30 6976550359, 6944146015

Fax Line: +30 210 4538663

Email: yardtech@otenet.gr Official Web Site: www.yardtech.gr